



APETEK SRL
Corso Italia, 19 IT-24040 Osio Sopra (Bg)
Tel. +39 (0) 35 49 42 201 - Fax +39 (0) 35 49 97 158
info@apetek.net - www.apetek.net

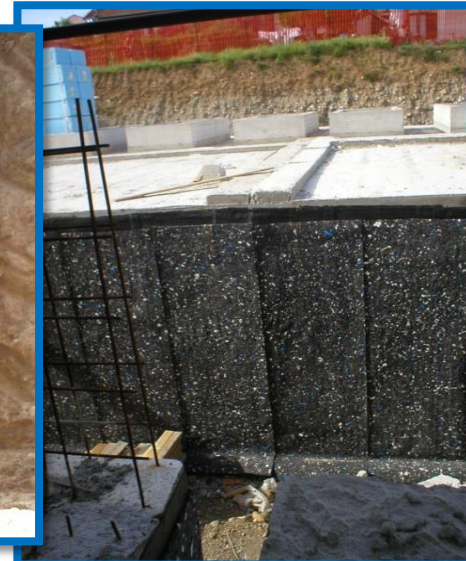
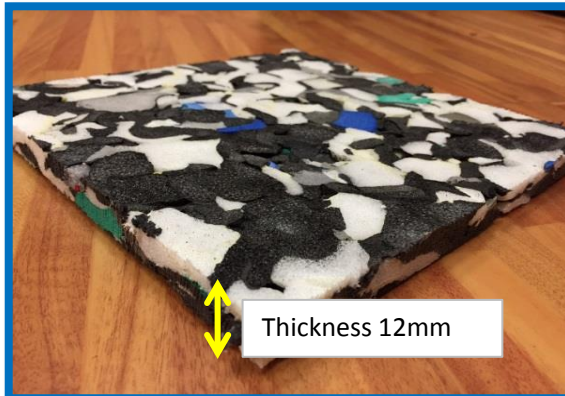
REFO PROTECT 12 N.D

Rev. 01/2018

Agglomerate PE foam closed-cell solid material without drilled and grooved, Thickness 12 mm

APPLICATIONS

Protection of bituminous sheaths and of all those surfaces which require a separation and protection against the walls.



PROPERTY		TEST METHOD	UNIT	RESULT
Thickness		ISO 1923	mm	12.06
Density		ISO 845	Kg/m ³	100.00
Compression stress resistance	10%	ISO 3386/1	kPa	28
	25%	ISO 3386/1	kPa	59
	50%	ISO 3386/1	kPa	139
Tensile Resistance		ISO 1798	Mpa	0.24
Lengthening at breaking		ISO 1798	%	37.7
Tear Resistance		DIN 53 507	N/mm	1.38
Compression set	25%, 30', 23°C	ISO 1856	%	12.08
	25%, 22h, 23°C			3.51
Compression set	50%, 30', 23°C	ISO 1856	%	30.60
	50%, 22h, 23°C			13.07
Conductivity	Anacon 88	INTERNAL	W/mK	0.0374
			Kcal/mh°C	0.0322
Thermic Stability		ISO 2796	°C	100
Fire behaviour	Flame Speed	DIN 75200	mm/min	0
Shore	Shore 0	ASTM D 2240	Shore	23
	Shore 00	ASTM D 2240	Shore	46
	Shore A	ISO R.868	Shore	19
	Shore D	ISO R.868	Shore	1
Conditioning	Weather condition		Hours	> 72
	Temperature		°C	22
	Dampness		%	41

The results about the test in this report are ascribe only to the sample tested

N°: 2016/13

Rev. 1/2016

operator E.L.

PROTECTION EFFICIENCY

Standard used: **UNI EN 13719: 2004**
Product standard: **UNI EN 13255:2005**

Test Conditions: 300 kN/m²
Result: < 2,0 %

DURABILITY

The residual resistance of the product at the end of this test, it appears to be <20% as required in Table **B.1** in the appendage **B** of the **UNI EN ISO 13252:2005**